

Overview of Ketamine Guidelines in Psychiatric Disorders.

Hesham Maged Mohamed Abdelfatah

International Scholars, Neuropsychiatry Doctor, Cairo University, Cairo- Egypt

*Corresponding author

Dr. Hesham Maged Mohamed Abdelfatah, International Scholars, Neuropsychiatry Doctor,, Cairo University, Cairo- Egypt.

Received: August 15, 2025; Accepted: September 15, 2025; Published: September 24, 2025

ABSTRACT

ketamine has antidepressive characters and approved by (FDA) for the induction and maintenance of anesthesia, Ketamine has been incorporated into the management of psychiatric disorders, such as major depressive disorder (MDD) especially with suicidal ideation or attempting, and of label in management of Bipolar Disorder, Post-Traumatic Stress Disorder (PTSD), Obsessive-Compulsive Disorder (OCD), Substance Use Disorders (SUD). Intravenous ketamine regimen is not a first-line management for psychiatric disorders and considered by the patient's interdisciplinary team work after failure of standard treatment. Ketamine mechanism of action is different from existing treatments and has demonstrated efficacy in improving people with Major Depression Disorder where conventional first line management as antidepressants, psychotherapy, have not be fully effective.in this paper we discussed all aspects of ketamine Protocol and guidelines usages in psychiatric field.

Keywords: Ketamine Infusion, Suicide Ideation, ECT, Depression, PTSD, OCD, Substance Abuse, Bipolar Disorder, Alcohol Abused

Discussion

What is Ketamine?

Ketamine is a dissociative anesthetic agent, a compound that induces a state of dissociation between the mind and body of patient. It provides multiple levels of anesthesia, from decreased consciousness but awake to fully unconsciousness, hence why ketamine is used as anesthetic agent.The stage between awake and deeply anesthetic, known as dissociation results in a level of awareness like when we are dreaming.

Background

Ketamine is an NMDA receptor antagonist with a power anesthetic effect. It was developed in 1963 as a replacement for phencyclidine (PCP) by Calvin Stevens at Parke Davis Laboratories. Ketamine started being used for veterinary aspects in Belgium and in 1964 was founded that compared to PCP, it produced minor hallucinogenic characters and shorter psychotomimetic actions. It was approved by FDA in 1970, and from there, it has been used as an anesthetic for children or patients undergoing minor operation.

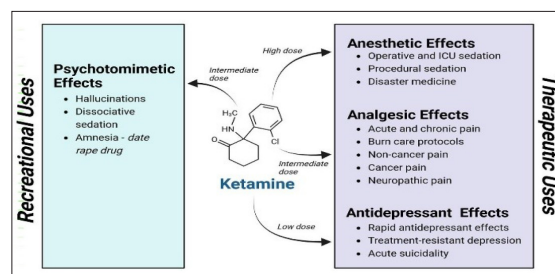


Figure 1: Ketamine Structure and it's Effects

Ketamine mechanism of action

In depression and at low doses ketamine is preferentially bind to and inhibit N-methyl-d-aspartate receptors (NMDARs) on γ -aminobutyric acid (GABA) ergic interneurons.This leading to reduced excitability of these inhibitory interneurons, which causes disinhibition of glutamatergic neurons. With increased depolarization of the presynaptic neuron leads to a surge of glutamate release.

Indications of treatment with Ketamine

1. Patients must be suffering from Resistant depression disorder not response to antidepressants drugs and psychotherapy.

2. Patients Have given at least 3 different types of antidepressants drugs for at least 6 weeks with maximum doses.
3. Patients Have given at least one type of psychological treatment, e.g., CBT, CAT, Mindfulness. In addition, have either received or been considered for ECT or augmentation of antidepressant medications.
4. Patients be referred to the regimen by their treating psychiatrist.
5. Patients be able to understand the aim of the that treatment regimen, its benefits and possible side effects and can give informed consent for this treatment.

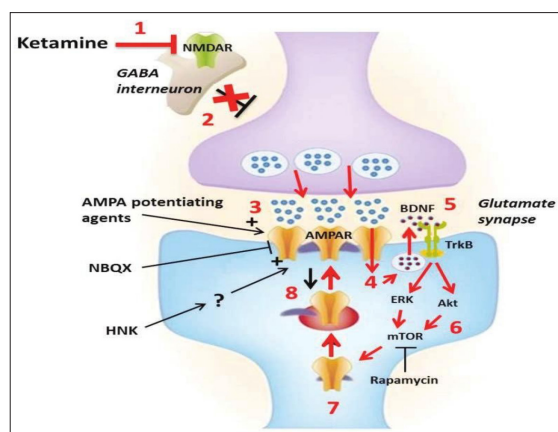


Figure 2: Ketamine Mechanism of Action.

Contraindications of ketaminetherapy

1. Patients not given informed consent.
2. Patients lacks of mental capacity.
3. Current or recent symptoms of psychosis.
4. Significant cardiovascular disease, thyroid disease, eye glaucoma, increased intracranial pressure, epilepsy.
5. Pregnant or breast feeding women or undergoing IVF therapy.
6. History of drug induced manic attack.
7. Patients can't stop alcohol use for at least 3 days.

Frequency of treatment of ketamine therapy

weekly regimen within the Ketamine with a maximum of 6 sessions for the acute phase of treatment. Then this will continue at an extended time for maintenance, weekly, fortnightly etc. The frequency may be Adjusted with patient as needs, Response rates in controlled trials have ranged from (25% to 85% at 24 hours post infusion) and from (14% to 70%) at 72 hours post infusion).

A weekly assessment and evaluation is done with a planned further infusion fortnightly extended to 3 weekly that depending upon patient responses.

Obtaining Consent

Before starting treatment with Ketamine obtaining informed consent is the responsibility of the Consultant Psychiatrist for Ketamine therapy, and the patients known the all details of guidance of ketamine therapy and he approved and accepted.

Advice to patients

1. For women's that's pains may be felt due to uterine contractions, that depending on the stage of menstrual cycle.
2. No drive or operate machines for 24 hours.
3. No alcoholism for 24 hours post treatment.

Prescribing Ketamine

This will be the responsibility of the Anaesthetist in consultation with Consultant Psychiatrist.

Ketamine will be prescribed on the inpatient Hospitals not in private clinic's.

Administration of ketamine

Ketamine will be used as a single sub-anaesthetic intravenous dose at (500 micrograms per kilogram taking over 40 minutes) with continuous vital sign monitoring, the dose can be altered according to response and the side effects, tolerability.

Pre-treatment with Ketamine

A full physical examination must be done, and the results made available to the Anaesthetist. (CBC, FBC, U&Es, LFTs ECG), are indicated.

Day of treatment with Ketamine

1. patient must be Fasting from consuming food for at least 4 hours before the setting of ketamine therapy,
2. fluids may be taken up to 2 hours prior to the session.

Administration of ketamine infusion

1. Cannulation and ketamine dose calculation. Dose as (500 micrograms per kg).
2. Product: ketamine injection vial 10 mg/ml.
3. Diluent: sodium chloride infusion.
4. Infusion rate: over 40 minute.
5. The patient will be observed for 2 hour after session and recorder every 30 minutes post infusion until the vital signs are stable and the Patient became full conscious.
6. The patient given a light snack and drink.

Side Effects of Ketamine therapy:

The side effects of using ketamine depend on factors such as the amount used, the method of intakes.

1. Psychiatric side effects of ketamine include: Anxiety, Agitation or irritation, Frustration or anger, Drowsiness, Confusion, Dizziness, Amnesia, Difficulties concentrating, Disorientation, Delusions, Hallucinations, Dissociation.
2. GIT side effects of ketamine include: Stomach Upset, Nausea, Vomiting.
3. Cardiovascular side effects of ketamine include: Decreased heart rate, Irregular heartbeat, Increased blood pressure,
4. Respiratory side effects of ketamine include: Slowed breathing.
5. Ophthalmologic side effects of ketamine include: Involuntary eye movements, Double vision.
6. Neurologic side effects of ketamine include: Decreased motor function, Seizures.



Figure 3: Ketamine Therapy for Depression.

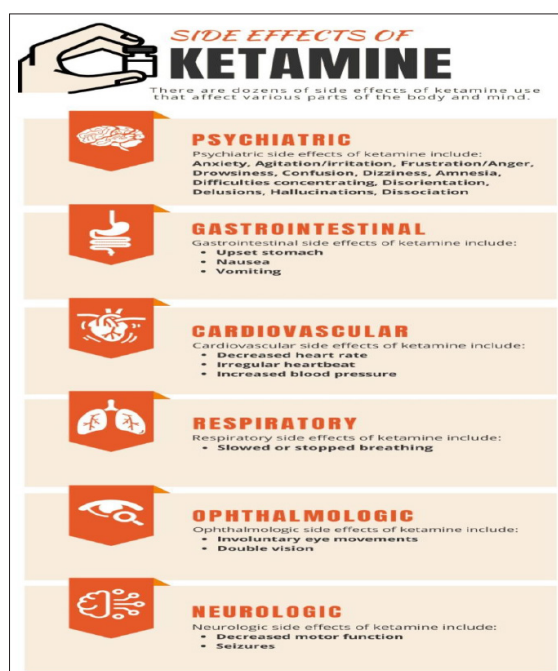


Figure 4: Ketamine Side Effects.

Termination of treatment with Ketamine therapy

Will be done if there is no response to the number of agreed sessions or if there a consistent nonresponse for 3 consecutive sessions or patient non compliance by Ketamine treatment protocol.

Off-label usages of ketaminen in psychiatric field

Mood disorders, Post-traumatic stress disorder (PTSD), Bipolar Disorder, Obsessive- Compulsive Disorder (OCD), Substance abuse management.

This psychiatric disorders not approved till now but research papers concluded a positive impact with Ketamine treatment.

Conclusion

Ketamine treatment for Resistant Depression Disorder includes pharmacotherapy, psychotherapy Currently oral antidepressants are the mainstay form of pharmacotherap there is an overwhelming need to address the obstacles in treating Resistant Depression Disorder due to the delayed treatment response with oral antidepressants and the poor response rate new modalities and drugs can be explored to alleviate the severity of symptoms while ketamine was initially approved as a general anesthetic, it has been repurposed to treat Resistant Depression Disorder, suicidal ideation, and other off-label uses such as substance-use disorders and Mood Disorders, PTSD, Bipolar Disorder, OCD.

Following FDA approval of intranasal (S)-ketamine used in conjunction with an oral antidepressant, other potential routes of administration, including intravenous is currently being researched and explored. An advantage of IV administration is the rapid antidepressant response observed the effects of ketamine in these patients can be observed within 24 hours of the initial dose and last 4-7 days after one intravenous infusion. Ketamine therapy response rates in controlled trials have ranged from 25% to 85% at 24 hours post infusion and from 14% to 70% at 72 hours post infusion. Disadvantage of IV ketamine administration Was its side effects, the high cost, special precautions and Commitment of the protocol and guidelines of Ketamine therapy. Ketamine been associated with the potential for abuse due to its ability to cause psychotropic side effects. The costs and benefits must be considered before treatment with ketamine begins.

Conflict of Interest

The author have declared that no competing interests exist.

Financial support and sponsorship

Not found.

Data Sharing and Data Accessibility Policy

I Agree.

References

1. Oxford Health Ketamine Service.
2. Royal College Statement on ketamine to treat depression.
3. Ketamine Infusion Therapy Checklist. Ketamine Infusion Therapy, AANA, July 2016.
4. [www.aana.com/docs/default-source/practice-my-aana-web-documents-\(members-only\)/ketamine-infusion-therapy-checklist.docx?sfvrsn=350b49b14](http://www.aana.com/docs/default-source/practice-my-aana-web-documents-(members-only)/ketamine-infusion-therapy-checklist.docx?sfvrsn=350b49b14). Turner, Mason, and Loretta Wilson. "Very Special K: A Little Goes A Long Way: Changing the Mental Health Treatment." Kaiser Permanente, June 2017.
5. Sanacora G, Frye MA, McDonald W, Mathew SJ, Turner MS, et al. American Psychiatric Association (APA) Council of Research Task Force on Novel Biomarkers and Treatments. A Consensus Statement on the Use of Ketamine in the Treatment of Mood Disorders. JAMA Psychiatry. 2017. 74: 399-405.

6. Parikh SV, Lopez D, Vande Voort JL, Rico J, Achtyes E, et al. Developing an IV ketamine clinic for treatment-resistant depression: a primer. *Psychopharmacology Bulletin*. 2021. 51: 109-124.